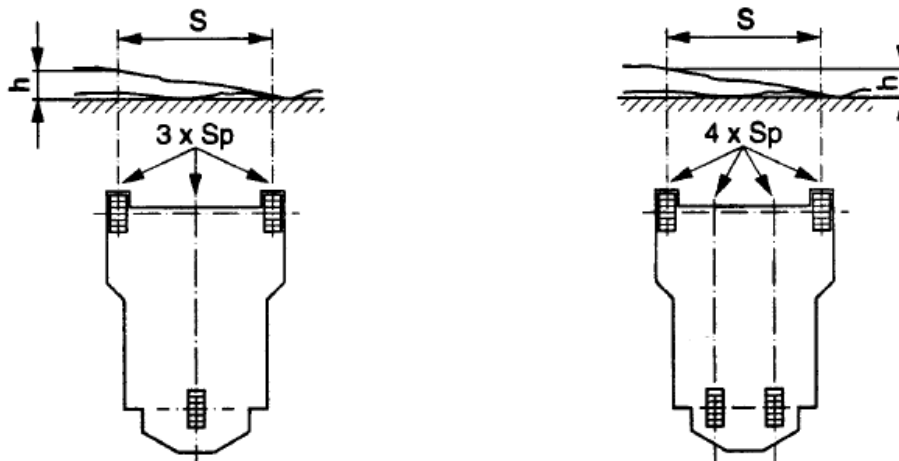




**Table 1. Differences in height across the driving track**

	permissible difference in height $h$ as limit value between the outer driving tracks $Sp$ with track width $S$ in m			
	up to 1,0 m	above 1,0 m up to 1,5 m	above 1,5 m up to 2,0 m	above 2,0 m up to 2,5 m
Truck lift height $\leq 6,00$ m	2,0 mm	2,5 mm	3,0 mm	3,5 mm
Truck lift height $> 6,00$ m and mechanized operation	1,5 mm	2,0 mm	2,5 mm	3,0 mm



**Table 2. Flatness tolerance lengthwise of the drive tracks**

Fixed measure for limit values in the drive tracks $Sp$ with distances of the measure points in m				
	1,0 m	2,0 m	3,0 m	4,0 m
for all types of application	2,0 mm	3,0 mm	4,0 mm	5,0 mm
The checking of the flatness is done according to DIN 18 202				

The remaining surface must correspond in its flatness to DIN 18 202/05.86, table 3, line 3.